

BALZER INC.

STEWARDS FOR  ENVIRONMENTS

THE ELIMINATOR

*Advanced
"Hands-off"
Operations!*



ULTRA Features:

- full circle baffle system (3/8" thick plate)
- larger primary & secondary with 6" stainless steel balls
- longer tongue for ease of handling
- 48" length PTO. OPTION constant velocity PTO or hydraulic drive
- 6" ULTRA SOLID spindle/hub assemblies
- 25,000 lbs. per axle load capacities





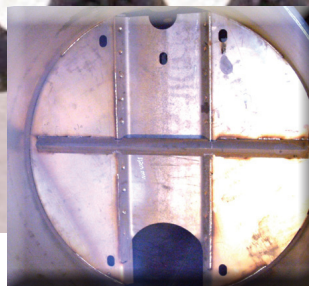
8500 Tridem Gear Steer Eliminator

Technical Specifications:

- Independent Undercarriage
- Auto-Trail Steering System
- 8" Suction Hose
- Durable Jurop Vacuum Pump (500 cfm)
- Side Opening 20" Hydraulic Top Hatch
- Variable Flow Rate Control via Rear Hydraulic Drive Slurry Discharge Pump
- Flow Control for 2 Hydraulic Swing Cylinders
- Electric Over Hydraulic Finger Tip Controller
- Cylinder Swing Cushion



Electric Hydraulic Valve Bank



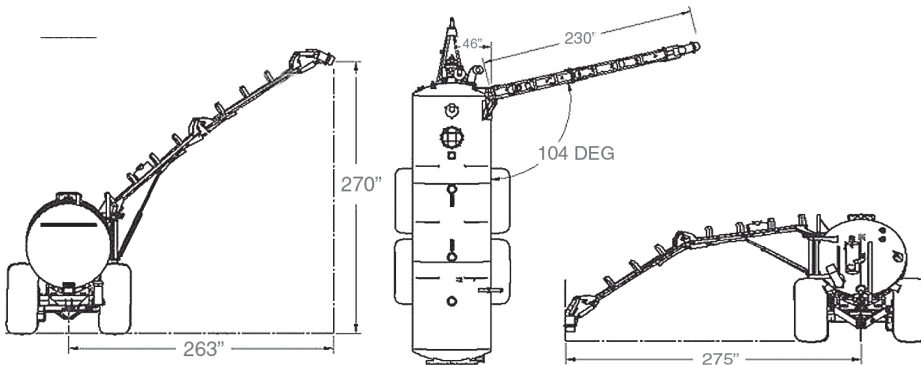
3/8" Full Circle Baffle



Receiving Funnel



Electric Over Hydraulic Finger Tip Controller



For the numerous OPTIONS available ask your nearest Authorized Balzer Dealer.

BALZER INC.
STEWARDS FOR  ENVIRONMENTS